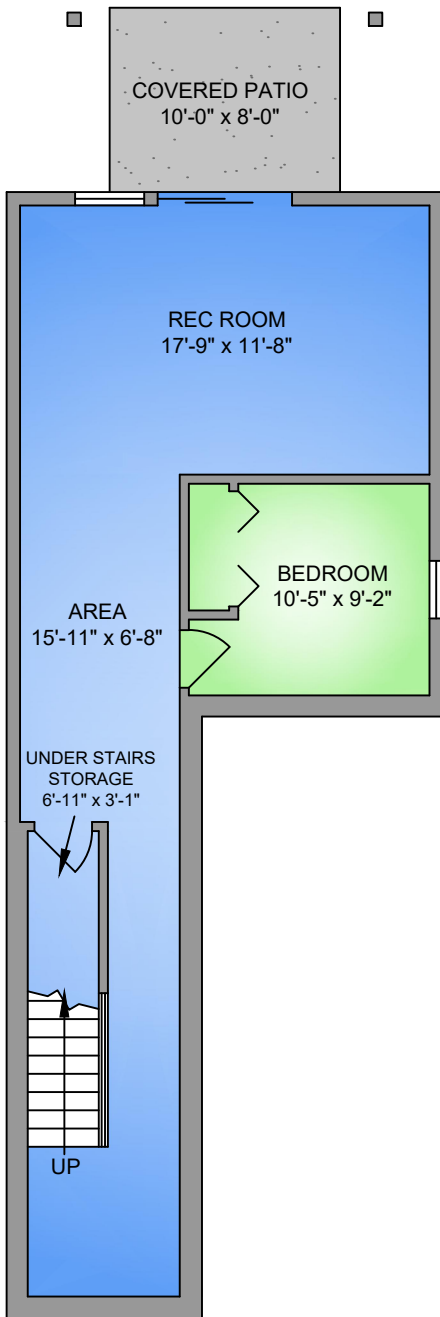


LOWER FLOOR

653 SQ. FT.

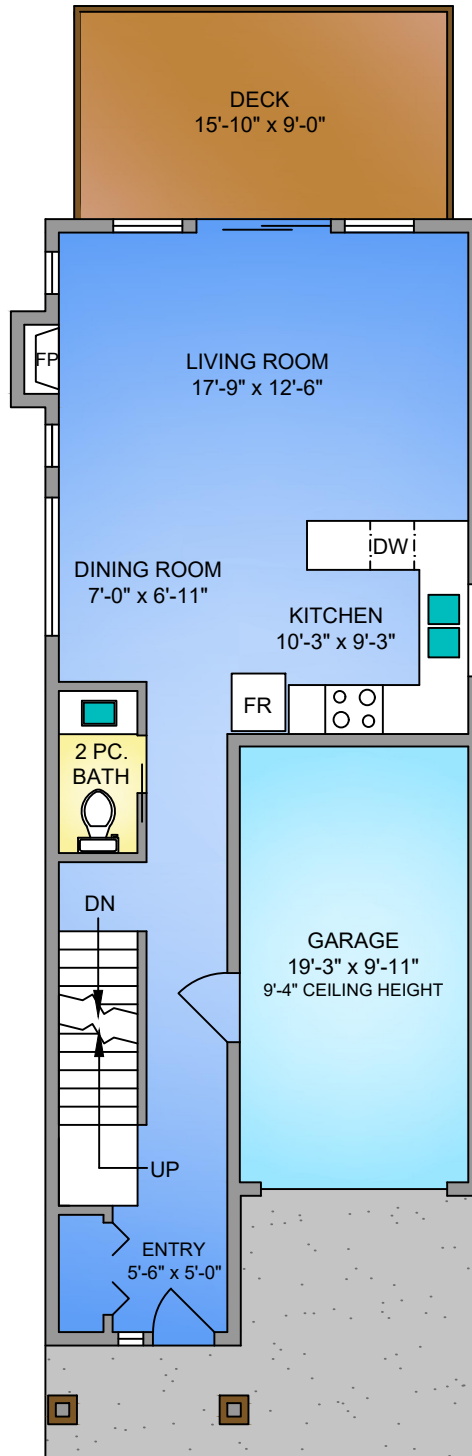
9' CEILING HEIGHT



MAIN FLOOR

653 SQ. FT.

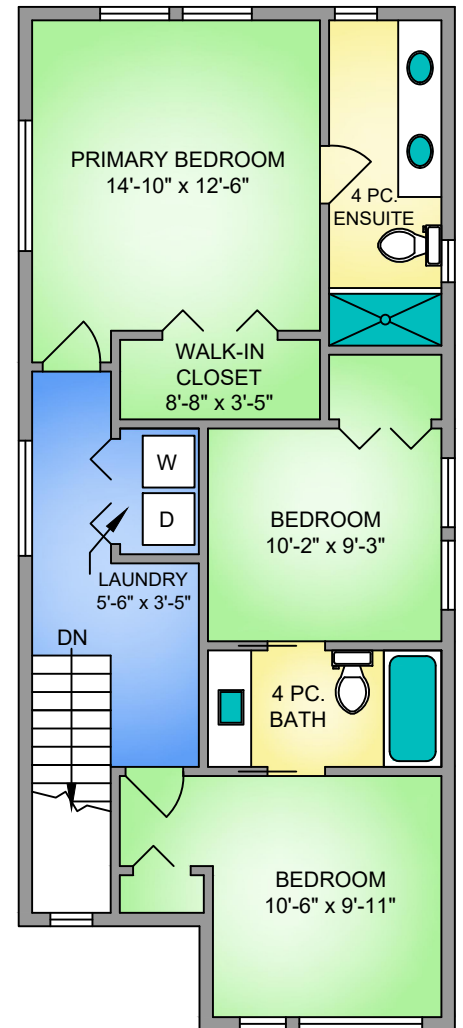
9' CEILING HEIGHT



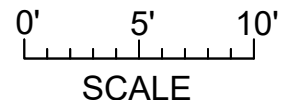
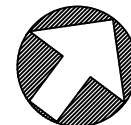
UPPER FLOOR

806 SQ. FT.

8' CEILING HEIGHT



NORTH



THE
PREFERRED HOMES TEAM
www.PreferredHomes.ca **RE/MAX** CAMOSUN



250-884-9753
matt@propermeasure.com
www.propermeasure.com



Limona Homes at Walfred

Lot 17		3485 MYLES MANSELL ROAD	
		NOVEMBER 25, 2020	
PREPARED FOR THE EXCLUSIVE USE OF THE PREFERRED HOMES TEAM			
PLANS MAY NOT BE 100% ACCURATE, IF CRITICAL BUYER TO VERIFY.			
FLOOR	AREA (SQ. FT.)		
	FINISHED	GARAGE	DECK / PATIO
LOWER	653	-	-
MAIN	653	205	143
UPPER	806	-	80
TOTAL	2112	205	223